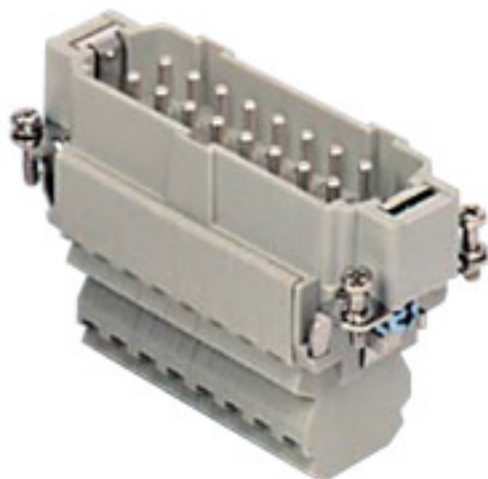








Product Sheet

Part Number: CSSM 16



Family	inserts
Version	connection with dual spring terminal
Series	CSS
Product type	with male contacts
Model	male insert
Reference standard	EN 61984 (2001-11)
Contact type	silver plated
No. of poles	16 poles + 
Voltage (V)	500V
Current (A)	16A (A.C./D.C.)
Wire section	0,14mm ² - 2,5mm ²
Awg size	26 - 14
Quality mark	    
IP degree of protection	IP20 degree of protection without enclosure; IP65, IP66, IP67, IP68 (EN 60529) and IP69K (DIN 40050 - 9) with enclosure

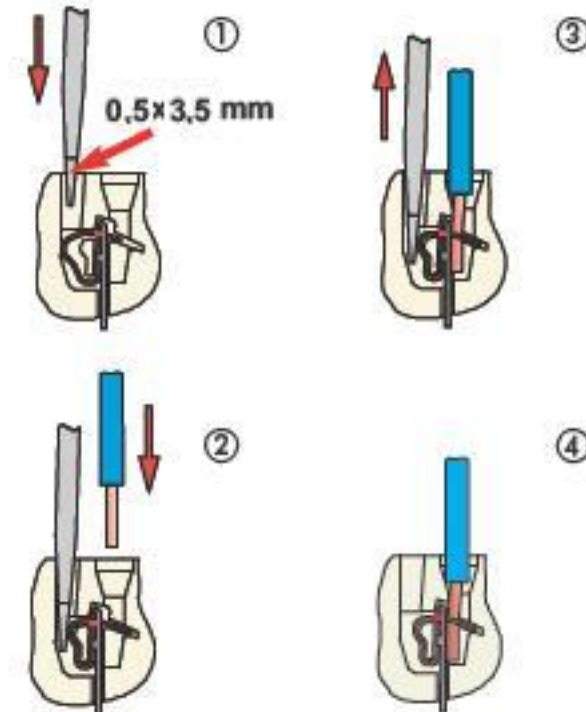
The information and the dimensions contained are not binding and may be changed without prior notice.
The drawing's dimensions are in mm.

Fixing centre distance	size "77.27"
Impulse withstand voltage	6kV
Pollution degree	3

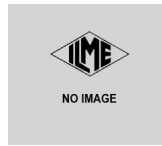
The information and the dimensions contained are not binding and may be changed without prior notice.
The drawing's dimensions are in mm.

Notes

- inserts for section conductors:
0.14 - 2.5 mm² - AWG 26 - 14
- conductors stripping length: 9...11 mm



The information and the dimensions contained are not binding and may be changed without prior notice.
The drawing's dimensions are in mm.



CSSF/M 16 inserts:

- can be mated with CNE, CSE, CCE, CTE, CTSE, CSH inserts
- characteristics according to EN 61984:
 - 16A 500V 6kV 3
 - 16A 400/690V 6kV 2
- rated voltage according to UL/CSA: 600V
- insulation resistance: > 10 GOhm
- ambient temperature limit: -40 °C ... +125 °C
- are made of self-extinguishing thermoplastic resin UL 94 V0
- mechanical life: > 500 cycles
- contact resistance: < 3 mOhm
- enclosures: size "77.27":
 - C-TYPE IP65/IP66
 - C7 IP67 stainless steel lever
 - V-TYPE IP65/IP66
 - stainless steel lever
 - T-TYPE IP65 insulating
 - JEI zinc-plated steel lever
 - BIG hoods
 - W-TYPE aggressive environments
 - EMC
 - central lever
 - IP68
- panel supports: COB

The information and the dimensions contained are not binding and may be changed without prior notice.
The drawing's dimensions are in mm.